



MODELS | SJ 40T SJ 45T



T SERIES Telescopic BOOM LIFTS

Skyjack's world class product designs provide the best possible value and lowest life cycle costs through unsurpassed reliability and ease of service. The SJ 40T and SJ 45T boom lifts make no exception to these philosophies, offering proven design features such as Skyjack's standard color coded and numbered wiring system with analog based controls.

The SJ 40T and SJ45T also feature Skyjack's exclusive DIRECTIONAL SENSING DRIVE AND STEER CONTROLS, which ensure the boom lift will always drive and steer

with respect to the operator rather than the orientation of the chassis.

The axle based 4WD system offers unsurpassed traction and terrainability; using a 'Detroit Locker' type differential on the rear axle and limited slip differential on the front oscillating axle.



4X4

T SERIES

Telescopic Boom Lifts

Specifications	SJ 40T	SJ 45T
Work Height	46' 7" (14.2 m)	51' 2" (15.6 m)
Platform Height	40' 7" (12.4 m)	45' 2" (13.8 m)
Horizontal Reach	34' (10.4 m)	39' 9" (12.1 m)
Platform Size	36" x 96" (0.9 x 2.4 m)	36" x 96" (0.9 x 2.4 m)
Stowed Width	90" (2.3 m)	90" (2.3 m)
Tailswing	37" (0.9 m)	37" (0.9 m)
Stowed Height	94" (2.4 m)	94" (2.4 m)
Stowed Length	25' 5" (7.8 m)	28' 10" (8.8 m)
Wheelbase	96" (2.4 m)	96" (2.4 m)
Ground Clearance	11" (0.3 m)	11" (0.3 m)
Platform Rotation	170°	180°
Jib Length	-	5' (1.5 m)
Jib Range +/-	-	63° / 66°
Weight	14,900 lbs (6,759 kg)	15,850 lbs (7,189 kg)
Gradeability - 4WD	45%	45%
Turning Radius (Inside) - 4WD	84" (2.1 m)	84" (2.1 m)
Turning Radius (Outside) - 4WD	198" (5.0 m)	198" (5.0 m)
Axle Oscillation	8" (0.2 m)	8" (0.2 m)
Drive Speed (stowed)	4.5 mph (7.2 km/h)	4.5 mph (7.2 km/h)
Drive Speed (raised)	0.5 mph (0.8 km/h)	0.5 mph (0.8 km/h)
Capacity	650 lbs (295 kg)	500 lbs (227 lbs)
Maximum # of Persons	2	2

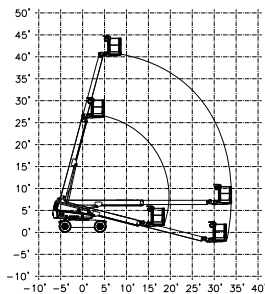
STANDARD FEATURES

- Drivable at full height
- Axle based 4WD
- "Detroit Locker" type rear differential and limited slip front differential
- Oscillating axle
- Wet disc SAHR brakes (rear axle)
- 48hp Deutz diesel engine
- Swing out engine tray
- Swing up fiberglass cowlings
- 360° continuous turret rotation
- Direction sensing drive and steer controls
- Proportional controls
- Relay based control system
- Color coded and numbered wiring system
- 45% gradeability
- 12 x 16.5 grip lug air-filled tires
- 110V AC outlet on platform with GFI
- Tilt alarm with drive cut-out
- All motion alarm
- Operator horn
- Modular platform railing system
- Spring hinged gate
- Lanyard attachment points
- Tie down/lifting lugs

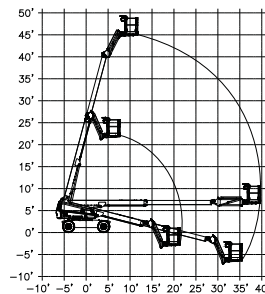
OPTIONS†

- 3500W generator (Includes hydraulic oil cooler)
- Welder ready package (Includes 12 kW generator, hydraulic oil cooler, 3-phase power connection in platform, and welder mount)
- Welder package (Includes 12 kW generator, hydraulic oil cooler, 3-phase power connection in platform, welder mount, and Lincoln V275-S welder)
- Cold weather start kit (Diesel only)
- Diesel scrubber
- Hydraulic oil cooler
- Flashing light
- Platform work heights
- 1/2" airline to platform
- 2WD
- 82 hp GM dual fuel engine
- Glazier Kit
- Grip lug foam-filled tires
- Tire sealant (in standard air-filled tires)
- High flotation air-filled tires

† Capacities, and machine weights may differ when options are added



SJ 40T REACH DIAGRAM



SJ 45T REACH DIAGRAM

Skyjack Head Office

55 Campbell Rd. Guelph, ON Canada N1H 1B9
 Sales Inquiries: 1-877-755-4387 (1-877-SJLIFTS)
 Main Switchboard: 1-800-265-2738
 Phone: 519-837-0888
 Fax: 519-837-8104
 Email: skyjack@skyjack.com

www.skyjack.com

This brochure is for illustrative purpose only and based on the latest information at the time of printing. Skyjack Inc. reserves the right to make changes at any time, without notice, to specifications, standard and optional equipment. Consult the Operating Maintenance and Parts Manuals for proper procedures. Work platforms have been tested to comply with ANSI and CSA standards as interpreted by Skyjack, Inc.